



MODOC COUNTY

SHASTA COUNTY

LASSEN COUNTY

BUTTE COUNTY

PLUMAS COUNTY

SIERRA COUNTY

NEVADA
CALIFORNIA

Eagleville

299

139

Adin

Likely

Madeline

Biaber

Nubieber

McArthur

Pittville

Fall River Mills

Little Valley

Termo

Ravendale

89

Stones Landing

Spaulding

Eagle Lake

139

Lake Forest

Susanville

Johnstonville

Litchfield

Standish

Wendel

44

36

Chester

Clear Creek

Westwood

Honey Lake

Janesville

Milford

Herlong Junction

Herlong

89

32

36

89

Lake Almanor

Canyondam

Greenville

Taylorville

Doyle

395

Portola

Backwourth

Vinton

Chilcoot

Hallelujah Junction

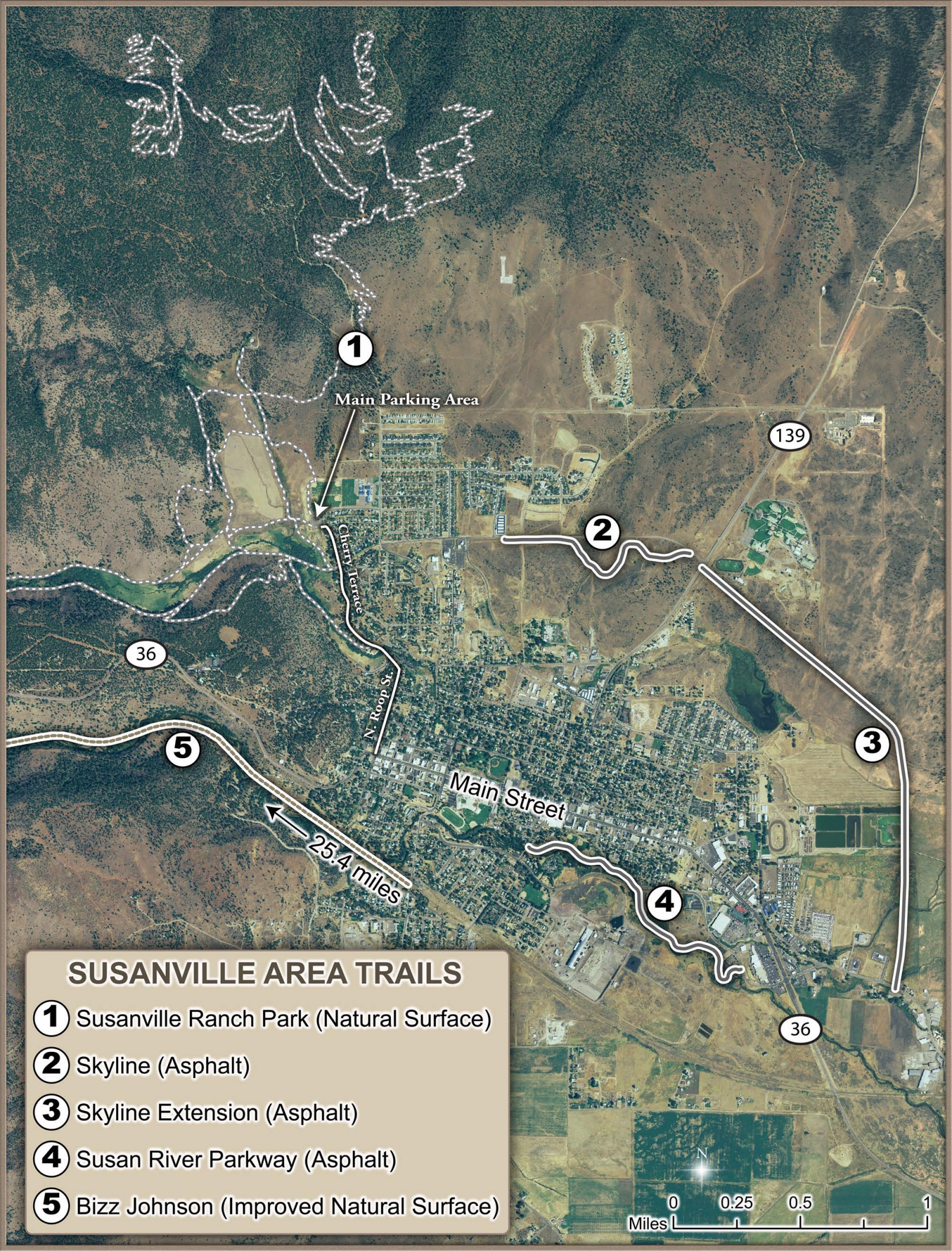
Loyalton

Sierraville

LASSEN COUNTY

*California's
Geographic
Crossroads*





1

Main Parking Area

2

Cherry Terrace

3

N. Roop St.

4

Main Street

5

25.4 miles

SUSANVILLE AREA TRAILS

- 1** Susanville Ranch Park (Natural Surface)
- 2** Skyline (Asphalt)
- 3** Skyline Extension (Asphalt)
- 4** Susan River Parkway (Asphalt)
- 5** Bizz Johnson (Improved Natural Surface)

